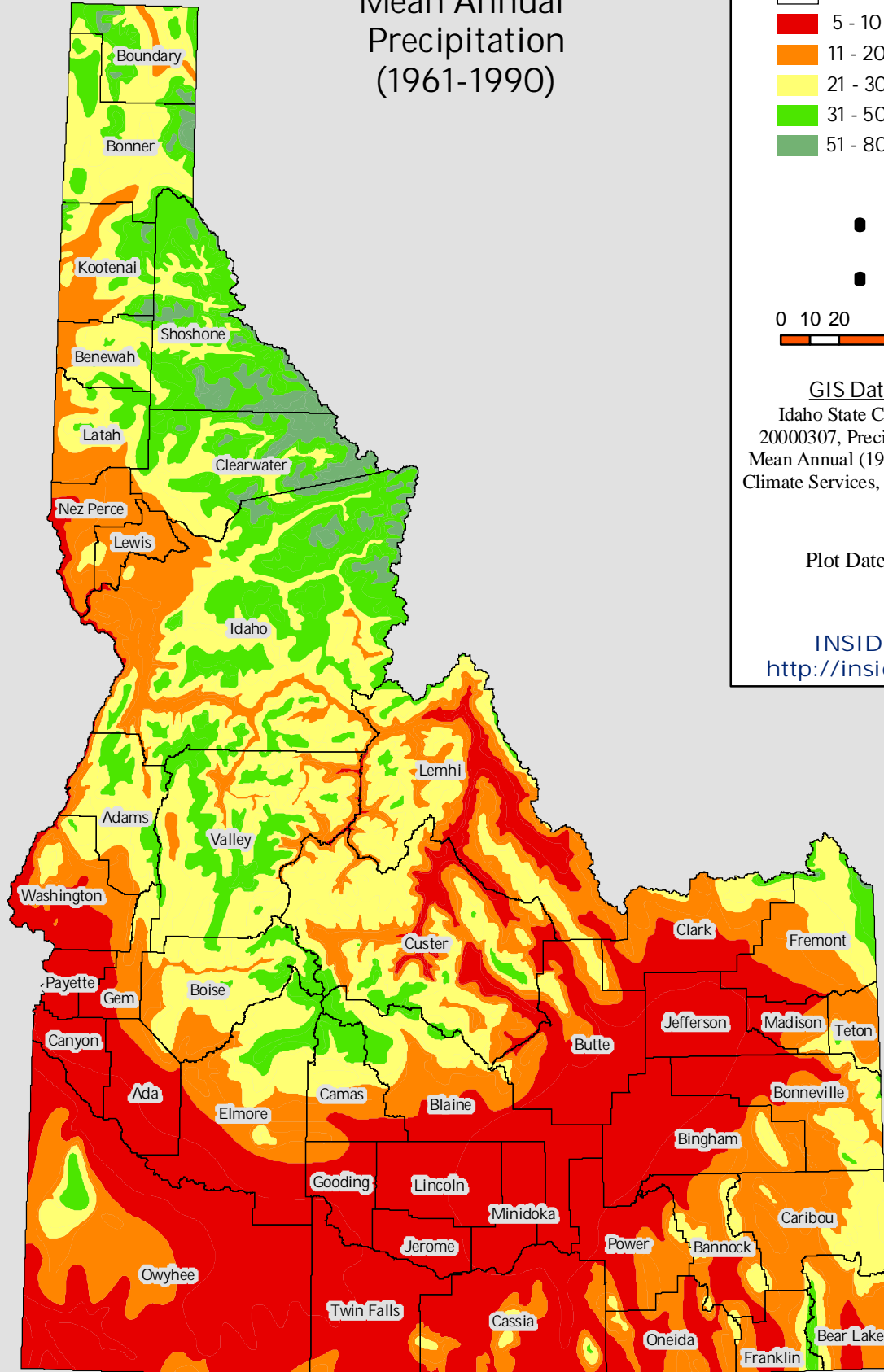
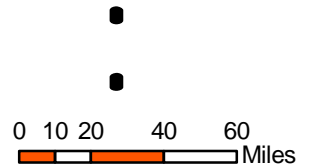


Mean Annual Precipitation (1961-1990)



Annual Precipitation in Inches

- County Boundaries
- 5 - 10
- 11 - 20
- 21 - 30
- 31 - 50
- 51 - 80



GIS Data Source:
Idaho State Climate Services
20000307, Precipitation for Idaho
Mean Annual (1961-90) Idaho State
Climate Services, Moscow, ID, USA.

Plot Date: 6/1/2006

INSIDE Idaho
<http://insideidaho.org>